

GASTRONORM

Professional kitchen equipment

The Gastronorm system originated in Switzerland and was adopted in the early 1970's by the British Standards Institution. Strictly speaking, a gastronorm measures the capacity of containers.

These can be solid metal, such as in roasting trays, perforated metal for steaming, composite plastic materials or disposable materials.

The abbreviation GN is widely used as shorthand for gastronorm.



GASTRONORM

Upright Solid Door: 2 x 1 Refrigerator/Freezer Cabinets



RH650NT - RH650LT



RH140NT - RH140LT

Gastronorm refrigerator/freezer upright cabinets are finished in 304 stainless steel and include fan forced cooling, Carel electronic controller, lockable doors and castors, adjustable rails and wire shelves, coved internal corners, interior lighting, removable door seals and heated facias.

Model Number	RH650NT	RH650LT	RH140NT	RH140LT
External W x D x H (mm) (Includes castors)	740 x 830 x 2010	740 x 830 x 2010*	1480 x 830 x 2010*	1480 x 830 x 2010*
Internal W x D x H (mm)	600 x 680 x 1400	600 x 680 x 1400	1340 x 680 x 1400	1340 x 680 x 1400
Nett Capacity (ltr)	650	650	1300	1300
Shelves	3	3	6	6
Voltage Hertz	220 - 240V 50HZ	220 - 240V 50HZ	220 - 240V 50HZ	220 - 240V 50HZ
Compressor Size (cc)	8.85	20.4	12	26.2
Weight Empty (kg)	149	153	199	204
Max. Power Consumption Watt per 24Kwh/24h	3.6	8	5.4	10.5
Temperature Range (°C)	+2/+8	-14/-20	+2/+8	-14/-20
Refrigerant Gas	R134a	R404a	R134a	R404a
Insulation Gas	CFC free	CFC free	CFC free	CFC free
Insulation Thickness (mm)	70	70	70	70
Max. Ambient Temp (°C) 75RH	38	38	38	38
Exterior Material	S/S AISI304	S/S AISI304	S/S AISI304	S/S AISI304
Interior Material	S/S AISI304	S/S AISI304	S/S AISI304	S/S AISI304

Options

Extra Shelf & Rails

Remote configuration

GASTRONORM

Undercounter Solid Door: 1 x 1 Refrigerator/Freezer Cabinets



RH4100NT - RH4100LT



RH3100NT - RH3100LT



RH2100NT - RH2100LT



Drawer Option - 2 or 3

Rhino gastronorm refrigerator/freezer undercounters are finished in 304 stainless steel which include fan forced ducted cooling, Carel electronic controller, lockable castors, adjustable rails and wire shelves, coved internal corners, removable door seals and heated facias.

GASTRONORM

Model Number	RH2100NT	RH3100NT	RH4100NT	RH2100LT	RH3100LT	RH4100LT
External W x D x H (mm) (includes castors)	1360 x 700 x 860	1795 x 700 x 860	2230 x 700 x 860	1360 x 700 x 860	1795 x 700 x 860	2230 x 700 x 860
Internal W x D x H (mm)	902 x 530 x 589	1337 x 530 x 589	1772 x 530 x 589	902 x 530 x 589	1337 x 530 x 589	1772 x 530 x 589
Nett Capacity (litr)	282	417	553	282	417	553
Shelves	2	3	4	2	3	4
Voltage Hertz	220 - 240V 50HZ	220 - 240V 50HZ	220 - 240V 50HZ	220 - 240V 50HZ	220 - 240V 50HZ	220 - 240V 50HZ
Compressor Size (cc)	7.5	7.5	8.85	20.4	20.4	20.4
Weight Empty (kg)	98	134	153	103	136.5	160
Max. Power Consumption Watt per 24Kwh/24h	2	2.4	2.8	8	8.8	9.4
Temperature Range (°C)	+2/+8	+2/+8	+2/+8	-14/-20	-14/-20	-14/-20
Refrigerant Gas	R134a	R134a	R134a	R404a	R404a	R404a
Insulation Gas	CFC free	CFC free	CFC free	CFC free	CFC free	CFC free
Insulation Thickness (mm)	50	50	50	50	50	50
Max. Ambient Temp (°C) 75RH	38	38	38	38	38	38
Exterior Material	S/S AISI304	S/S AISI304	S/S AISI304	S/S AISI304	S/S AISI304	S/S AISI304
Interior Material	S/S AISI304	S/S AISI304	S/S AISI304	S/S AISI304	S/S AISI304	S/S AISI304

Options

Option 650mm High (low line)

Extra Shelf & Rails

Drawer Option per Door

150mm Legs

GASTRONORM

Undercounter Glass Door: 1 x 1 Refrigerators



RH2100NTG

Suited for Gastronorm Pans



Glass door: 1 x 1 gastronorm refrigerator undercounters finished in 304 stainless steel and include fan forced ducted cooling, Carel electronic controller, lockable castors, adjustable rails and wire shelves, coved internal corners and double glazed doors with removable door seals and heated facias.

Model Number	RH2100NT G (2 door)	RH3100NT G (3 door)	RH4100NT G (4 door)
External W x D x H (mm) (includes castors)	1360 x 700 x 860	1795 x 700 x 860	2230 x 700 x 860
Internal W x D x H (mm)	902 x 530 x 589	1337 x 530 x 589	1772 x 530 x 589
Nett Capacity (ltr)	282	417	553
Shelves	2	3	4
Voltage Hertz	220 - 240V 50HZ	220 - 240V 50HZ	220 - 240V 50HZ
Compressor Size (cc)	7.5	7.5	8.85
Weight Empty (kg)	98	134	153
Max. Power Consumption Watt per 24Kwh/24h	2	2.4	2.8
Temperature Range (°C)	+2/+8	+2/+8	+2/+8
Refrigerant Gas	R134a	R134a	R134a
Insulation Gas	CFC free	CFC free	CFC free
Insulation Thickness (mm)	50	50	50
Max. Ambient Temp (°C) 75RH	38	38	38
Exterior Material	S/S AISI304	S/S AISI304	S/S AISI304
Interior Material	S/S AISI304	S/S AISI304	S/S AISI304

Options

Extra Shelf & Rails

150mm Legs

GASTRONORM

Undercounter Remote Solid Door: 1 x 1 Normal Refrigerator/Freezers



All remote cabinets are pre-wired ready for site installation as standard and include: Carel digital control, fully welded expansion valve, solenoid valve, check valve and two isolation valves. The normal and low temp cabinets have been designed to use R404a/R507 refrigerant with other refrigerants available on request such as Glycol cooling.

Model Number	RH2100NTR (2 door)	RH3100NTR (3 door)	RH4100NTR (4 door)	RH2100LTR (2 door)	RH3100LTR (3 door)	RH4100LTR (4 door)
External W x D x H (mm) (includes castors)	1200 x 700 x 860	1655 x 700 x 860	2090 x 700 x 860	1200 x 700 x 860	1655 x 700 x 860	2090 x 700 x 860
Internal W x D x H (mm)	742 x 530 x 589	1197 x 530 x 589	1632 x 530 x 589	742 x 530 x 589	1197 x 530 x 589	1632 x 530 x 589
Nett Capacity (ltr)	282	417	553	282	417	553
Shelves	2	3	4	2	3	4
Voltage Hertz	220 - 240V 50HZ	220 - 240V 50HZ	220 - 240V 50HZ	220 - 240V 50HZ	220 - 240V 50HZ	220 - 240V 50HZ
Weight Empty (kg)	95	130	148	95	130	148
Temperature Range (°C)	+2/+8	+2/+8	+2/+8	-14/-20	-14/-20	-14/-20
Refrigerant Gas	R404a	R404a	R404a	R507	R507	R507
Insulation Gas	CFC free	CFC free	CFC free	CFC free	CFC free	CFC free
Wattage	344	570	759	367	573	710
Insulation Thickness (mm)	50	50	50	50	50	50
Max. Ambient Temp (°C) 75RH	38	38	38	38	38	38
Exterior Material	S/S AISI304	S/S AISI304	S/S AISI304	S/S AISI304	S/S AISI304	S/S AISI304
Interior Material	S/S AISI304	S/S AISI304	S/S AISI304	S/S AISI304	S/S AISI304	S/S AISI304

Options

Extra Shelf & Rails

Drawer Option per Door

Glass Door Cabinet

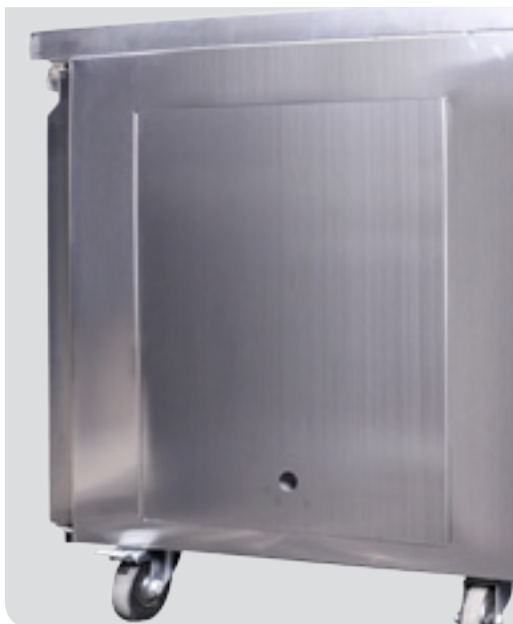
150mm Legs

GASTRONORM

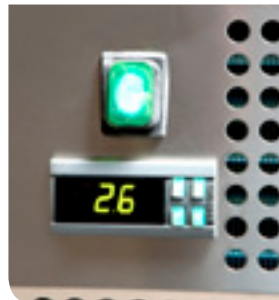
Remote Gastronorm - Details and Features

GASTRONORM

Side panels for easy access



- Fitted with solenoid and check valve
- Pipe access through the wall
- Power supply
- Pipe access through the floor
- Access valves



- Power On/Off
- Digital Thermostat Display



Removable side cover for ease of access to services, valves, water to tundish



GASTRONORM

Gastronorm Gallery



GASTRONORM

HABS GASTRONORM

Undercounter: 1 x 1 Solid Door Refrigerator/Freezers

Drawer option



MGCR180GN -
MGCF180GN

MGCR135GN - MGCF135GN

HABS gastronorm refrigerator/freezer undercounters finished in 304 stainless steel include fan forced ducted cooling, Carel electronic controller, lockable castors, adjustable rails and wire shelves, coved internal corners, removable door seals and heated facias. Comes standard with lockable castors overall height 835mm high.

Model Number	MGCR135GN	MGCF135GN	MGCR180GN	MGCF180GN
External W x D x H (mm) (with legs)	1352 x 700 x 850	1352 x 700 x 850	1802 x 700 x 850	1802 x 700 x 850
Internal W x D x H (mm)	800 x 580 x 600	800 x 580 x 600	1250 x 580 x 600	1250 x 580 x 600
Nett Capacity (litr)	275	275	430	430
Shelves	2	2	2	2
Voltage Hertz	220 - 240V 50HZ	220 - 240V 50HZ	220 - 240V 50HZ	220 - 240V 50HZ
Weight Empty (kg)	138	138	151	151
Max. Power Consumption Watt per 24Kwh/24h	495w	627w	517w	750w
Temperature Range (°C)	+2/+8	-18/-22	+2/+8	-18/-22
Refrigerant Gas	R404a	R404a	R404a	R404a
Insulation Gas	CFC free	CFC free	CFC free	CFC free
Insulation Thickness (mm)	50/90 counter top	50/90 counter top	50/90 counter top	50/90 counter top
Max. Ambient Temp (°C) 75RH	43	43	43	43
Exterior Material	S/S AISI304	S/S AISI304	S/S AISI304	S/S AISI304
Interior Material	S/S AISI304	S/S AISI304	S/S AISI304	S/S AISI304

Options

Extra Shelf & Rails

Remote configuration

Drawer option per Door

HABS GASTRONORM

Upright: 2 x 1 Refrigerator/Freezer Cabinets



MGUR140GN - MGUF140GN



MGUR70GN - MGUF70GN

HABS gastronorm refrigerator/freezer upright cabinets are finished in 304 stainless steel and include fan forced cooling, Carel electronic controller, lockable doors and castors, adjustable rails and wire shelves, coved internal corners, interior lighting, removable door seals and heated facias. Comes standard with lockable castors overall height 2013mm high.

HABS GASTRONORM

Model Number	MGUR140GN	MGUF140GN	MGUR70GN	MGUF70GN
External W x D x H (mm) (with legs)	1398 x 805 x 2028	1398 x 805 x 2028	702 x 805 x 2028	702 x 805 x 2028
Internal W x D x H (mm)	1280 x 690 x 1518	1280 x 690 x 1518	587 x 690 x 1518	587 x 690 x 1518
Nett Capacity (ltr)	1329	1329	607	607
Shelves	6	6	3	3
Voltage Hertz	220 - 240V 50HZ	220 - 240V 50HZ	220 - 240V 50HZ	220 - 240V 50HZ
Weight Empty (kg)	147	226	147	226
Max. Power Consumption Watt per 24Kwh/24h	580w	1346w	505w	713w
Temperature Range (°C)	-2/+8	-18/-22	-2/+8	-18/-22
Refrigerant Gas	R134a	R404a	R134a	R404a
Insulation Gas	CFC free	CFC free	CFC free	CFC free
Insulation Thickness (mm)	60	60	60	60
Max. Ambient Temp (°C) 75RH	43	43	43	43
Exterior Material	S/S AISI304	S/S AISI304	S/S AISI304	S/S AISI304
Interior Material	S/S AISI304	S/S AISI304	S/S AISI304	S/S AISI304

Options

Extra Shelf & Rails

Remote configuration